

Table Of Contents

LOGINS LIVE MONITOR OVERVIEW	1
Overview	1
OPTIONS	3
Menu Bar	3
File Close	3
View List	3
View Details	3
View Always on Top	4

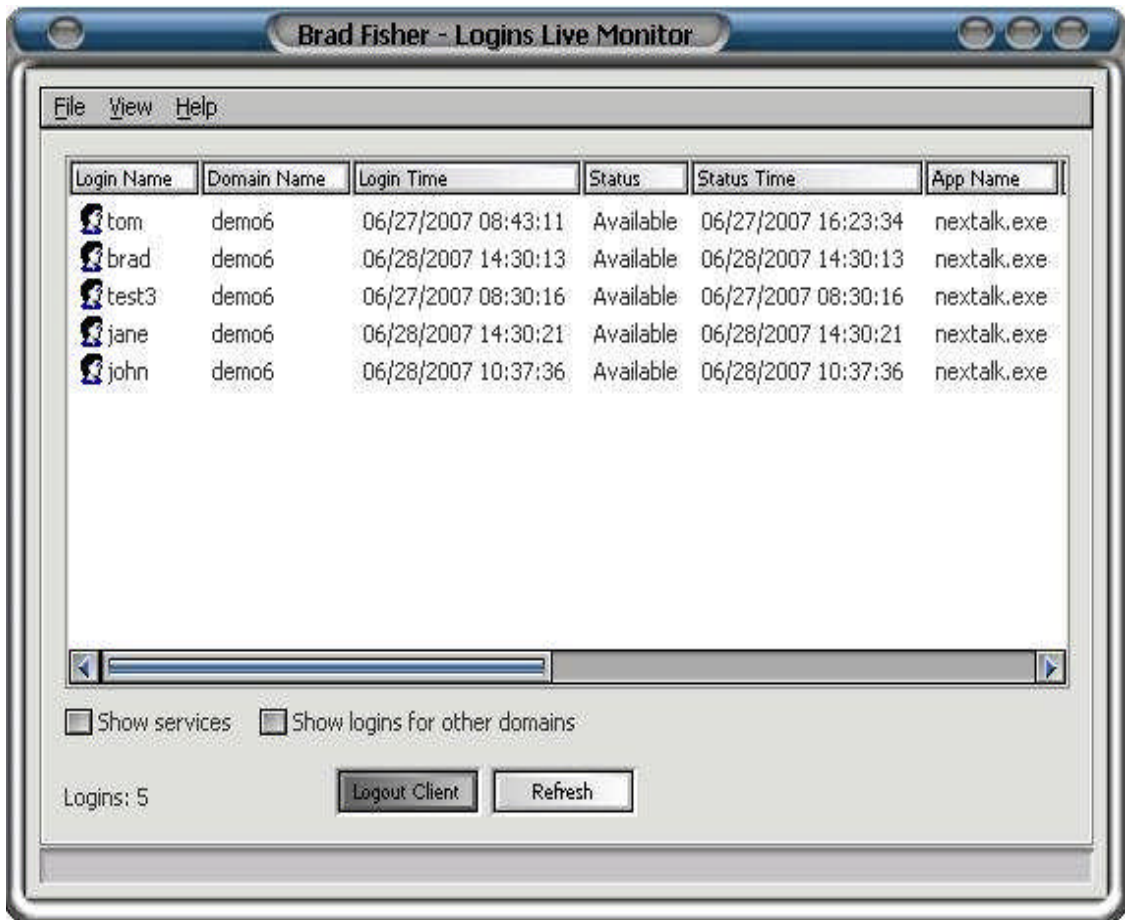
Logins Live Monitor Overview

Overview



The **Logins Live Monitor** is normally run only by the NexTalk administrators or system supervisors and is not available to basic NexTalk users. From this module, an administrator or supervisor can observe current NexTalk user logins. The Listen IP and Session ID values associated with each login are only present for use by the NexTalk Server. NexTalk administrators have the ability to log users out from this module. The remote log out privilege is by default only available to administrators but can be enabled for other groups, like supervisors (see the Users and Groups manual for more information). When a user is logged out remotely, they will see this pop-up message:

Logins Live Monitor



When the Logins Live Monitor first starts, it reads the Session Table from the central NexTalk database. The NexTalk "Channel Service" is then used to create a "live feed" of login changes. The Logins Live Monitor can also be updated by choosing the Refresh button. The check box "**Show services**" shows the system services currently running. The "**Show logins for other domains**" is for monitoring the subdomains.

Options

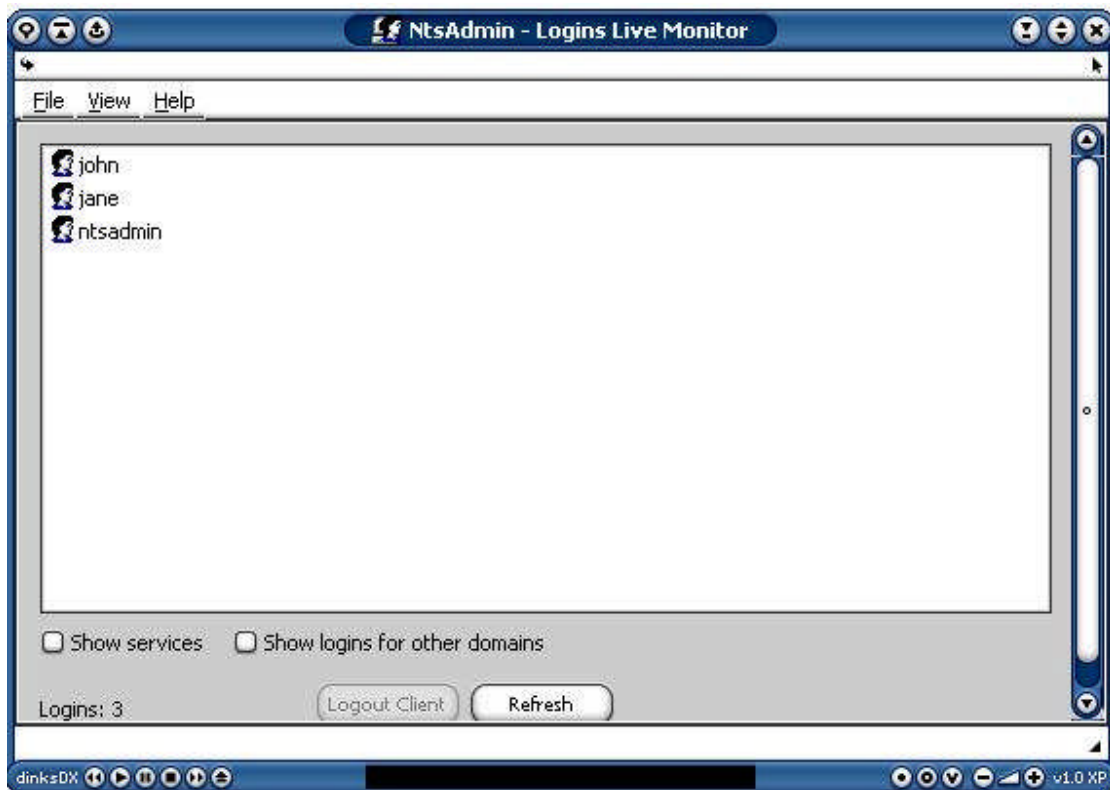
Menu Bar

File | Close

This option closes the Logins Live Monitor module.

View | List

By selecting the list view, user logins will be displayed only as a list of Login Names.

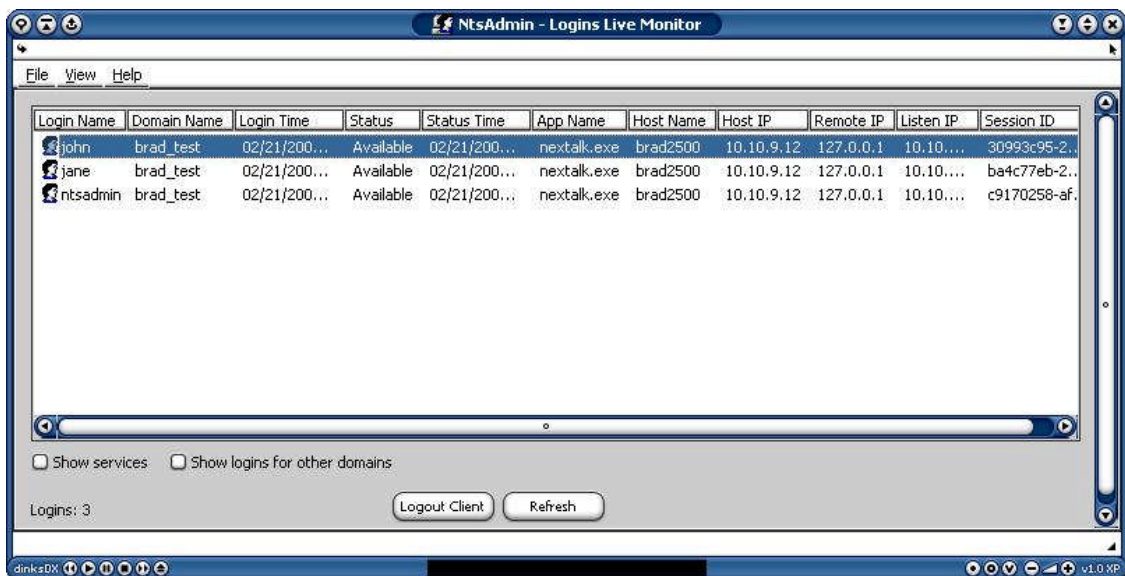


View | Details

Logins Live Monitor

By selecting the details view, all available information for each user login will be displayed in the main list window including:

- a) Login Name
- b) Domain Name
- c) Login Time
- d) Current Status (Available, Busy, etc)
- e) Status Time (when the user changed to the current status)
- f) Host Name (the machine name of the PC used by this user)
- g) Host IP (the IP address of this user's PC, as seen by the PC itself)
- h) Remote IP (the IP address for this user's PC, as seen by the NTS server)
- i) listen IP
- J) Session ID



View | Always on Top

This option keeps the Logins Live Monitor window in front of all other open windows.