

NXi Communications, Inc.



Pika Inline MM PE

Installation Instructions - Windows 2000, 2003, XP

***Upgrade from NTS 4.0, 5.0 to NTS 6.0 ***

NXi Communications, Inc.
4505 S. Wasatch Blvd., Ste. 120
Salt Lake City, UT 84124
Ph: (801) 274-6001 / Fax: (801) 274-6002
E-mail: nxi@nxicom.com

System Requirements:

Before installing your Pika board, make sure that your computer meets the following requirements:

- A. An available PCI or PCIX bus slot (33 bit or 64 bit) operating at 33 Mhz
- B. 40 megabytes of free space on the hard disk
- C. OS: Windows 2000 (SP4), 2003 (SP1), XP Pro (SP2)
- D. Pentium 4 CPU running at 1.3 GHz or faster
- E. At least 512 megabytes of RAM

Note: Before installing any new Service Packs or Windows updates, please contact NXi or visit our website for compatibility.

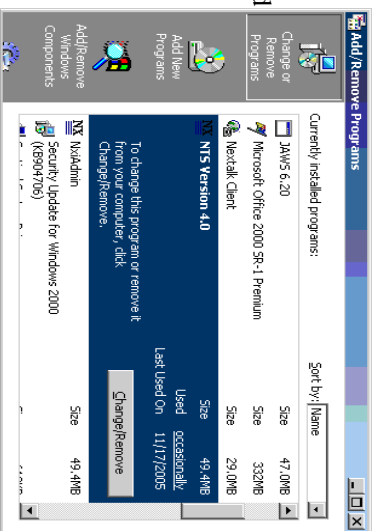
NTS 6.0 is only compatible with the Inline MM. If you have an older model of the Inline it will not function. If you are unsure what model you have please contact NXi.

Uninstall the old NTS install:

Step 1

You will need to uninstall the current version of NTS.

Browse to **Add/Remove program** in the **Control Panel**. Highlight **NTS Version 4.0** and click the **Change/Remove** icon. Follow the uninstall instructions.



Removing the old Pika Inline 4GT:

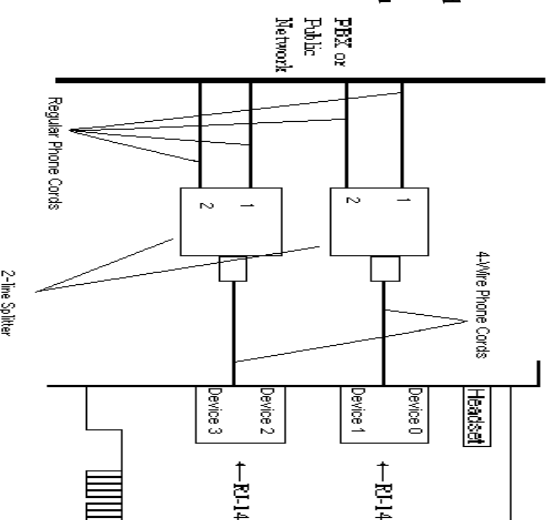
Step 1

Turn off the computer and disconnect it from the AC power source. Make sure that both you and the computer are properly grounded. Remove the cover and set it aside. Remove the old **Pika Inline 4GT** board. Taking the **Pika Inline MM**, fit the board's PCI bus connector into the computer by gently but firmly pressing it into the PCI bus slot. Make sure the board's PCI bus connector is seated securely. Fasten the board in place using the appropriate screw or bracket (depending on your computer chassis). Replace the cover, and reconnect the computer to its AC power source.

Step 2

Connect your phone lines to the Pika board. The Pika board supports up to 4 lines. To connect the lines properly, you will need to purchase the following connectors:

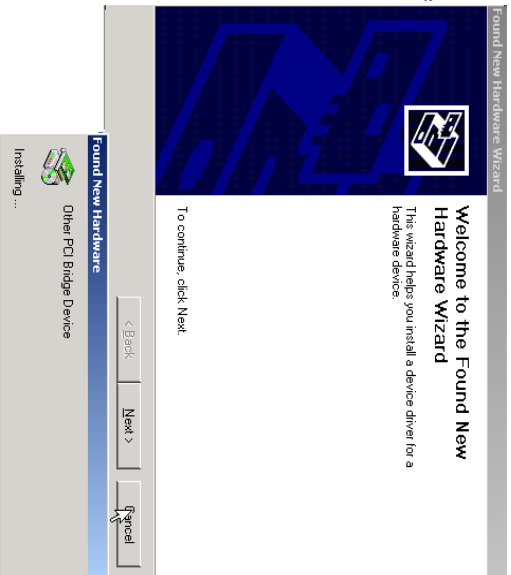
- Two 4-wire phone cords
- Two 2-line splitters, NOT adapters
- Four Regular Phone Cords
- Two 4-wire line couplers



Installing the Pika Inline MM Drivers:

Step 1

Turn the computer on. If windows tries to install the drivers for the board. Select **CANCEL**.



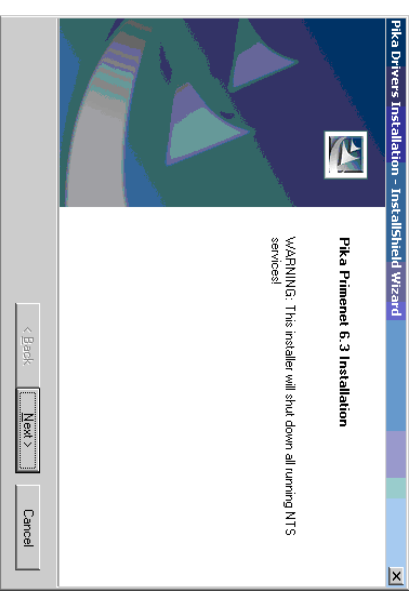
Step 2

Run Setup.exe on the NTS 6.0 CD-Rom. Click the **Install Pika Montecarlo Drivers** link to install the drivers for the Pika Inline MM board.



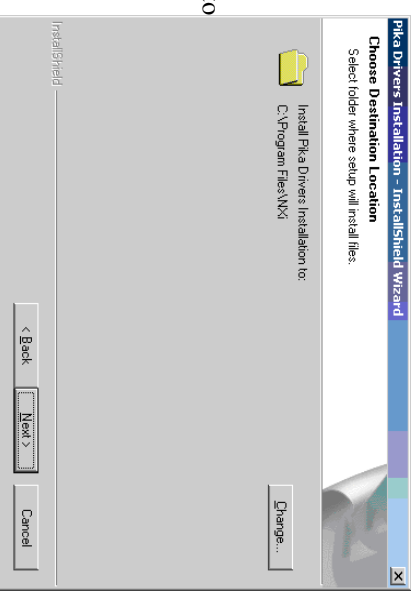
Step 3

Click **Next**



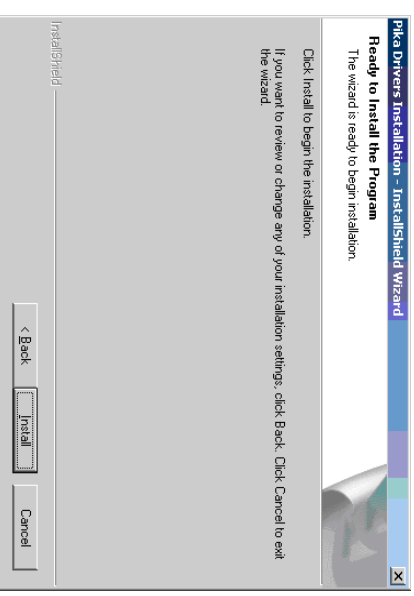
Step 4

It is **recommended** that you use the default installation path. But to change the install path click **Change** and select where you want the files to be installed, otherwise click **Next**.



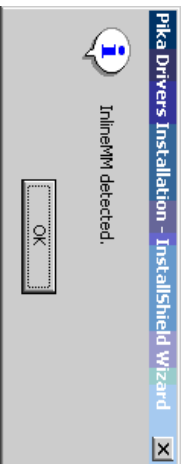
Step 5

Click **Install**



Step 6

Click **OK**



Step 7

You will now see the **InstallShield Wizard Complete** window. Select **Yes, I want to restart my computer now** and click **Finish**. As referenced in the NTS Quick Start Guide, you may now install the NTS server software on this PC. You will need to check the box for “Telephony Servers” to install the NTS software to control this Inline MM board.

