



## **Pika PrimeNet MM Installation Instructions**

**\*\*For New Installations Only\*\***

**Supported OS: Windows 2000, XP, 2003**

### **System Requirements:**

Before installing your Pika board, make sure that your computer meets the following system requirements:

- A. An available PCI or PCIX bus slot (33 bit or 64 bit) operating at 33 Mhz
- B. 40 megabytes of free space on the hard disk.
- C. Operating System: Windows 2000 (SP4), 2003 (SP1), XP Pro (SP2)
- D. Pentium 4 or CPU running at 1.3 GHz or faster.
- E. At least 512 megabytes of RAM.

**Note:** Before installing any new Service Packs or Windows updates, please contact NXi or visit our website for compatibility.

### **Hardware Installation:**

**Important Note:** Please have the NTS ISDN/PRI Line Configuration worksheet completed before you proceed. You will need to know what the line settings are in order to complete the hardware/driver installation.

**Please Note:** If you already have NTS 4.0 on this PC, then you also have an earlier version of the Pika Primenet driver installed. Removing earlier versions of the Pika driver (Monte Carlo versions 6.0 or 6.1) is somewhat difficult and requires manual steps beyond the "Remove Program" method. Please contact NXi for details. You may also take this opportunity to upgrade the OS on your machine to Windows 2003, and this step will properly remove the older Pika driver as well.

#### **Installing the Pika Primenet MM card in the PC:**

Turn off the computer, but leave it plugged into a properly grounded AC outlet. Remove the PC cover and set it aside. Now, touch the computer chassis and the metal bracket of the Primenet card. At this point you, the PC, and the board are all at a ground potential which minimizes the chance of damaging the card with a voltage discharge. Fit the board's PCI bus connector into the computer by gently but firmly pressing it into the available PCI bus slot. Make sure the board's PCI bus connector is seated securely. Fasten the board in place using the appropriate screw or bracket (depending on your computer chassis). Replace the cover of the PC.

## Driver Installation:

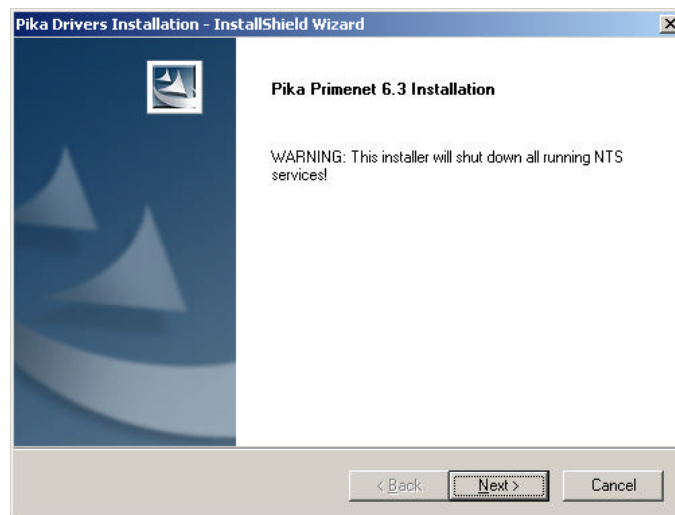
### Step 1

Turn the computer back on. The “Found New Hardware Wizard” will launch. Press “Cancel” to close that window. . Run Setup.exe on the NTS 6.0 CD-Rom. Click the **Install Pika Montecarlo Drivers** link to install the drivers for the Pika PrimeNet board



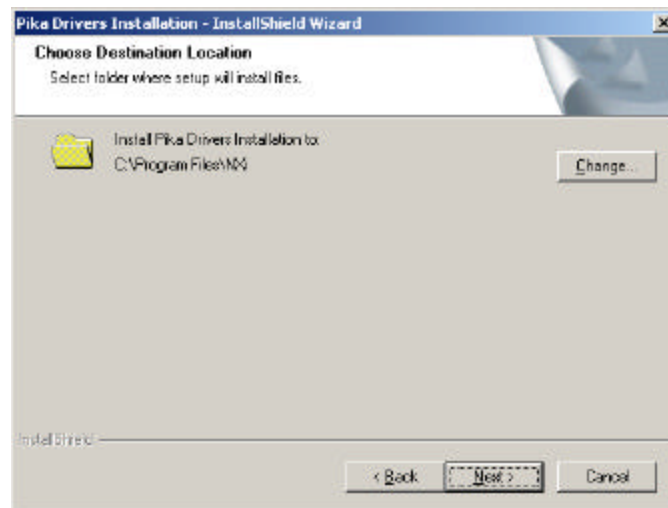
### Step 2

Click **Next**



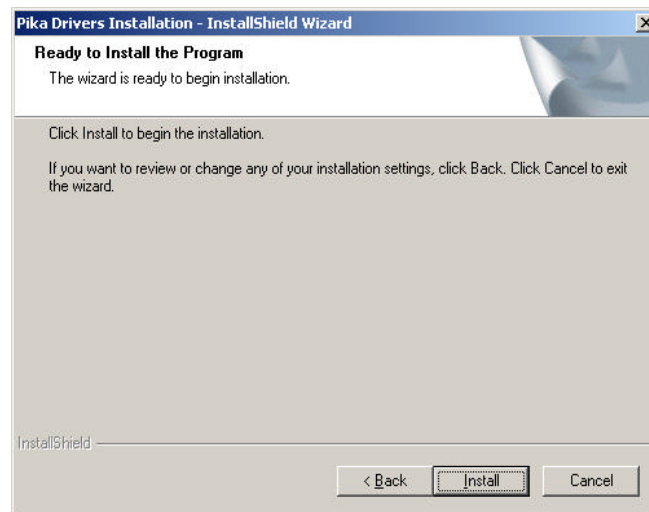
### Step 3

It is recommended that you use the default installation path. But to change the install path click **Change** and select where you want the files to be installed, otherwise click **Next**.



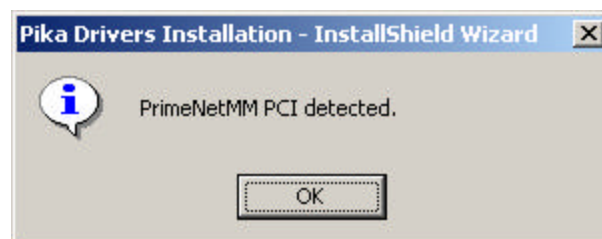
### Step 4

Click **Install**



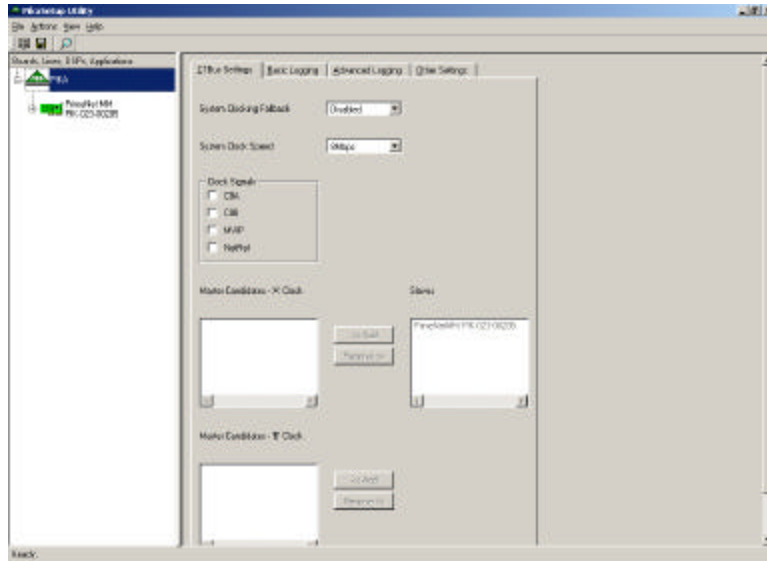
### Step 5

Click **OK**



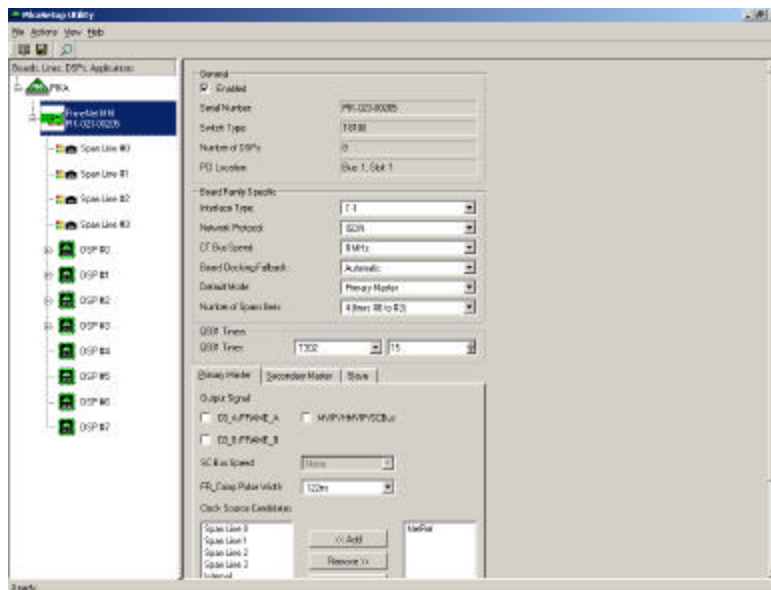
## Pika Setup Utility:

You will now see the Pika setup Utility window. If this window does not open, click the windows **Start** button then browse to **All Programs, NTS** then select **Pika Setup**.



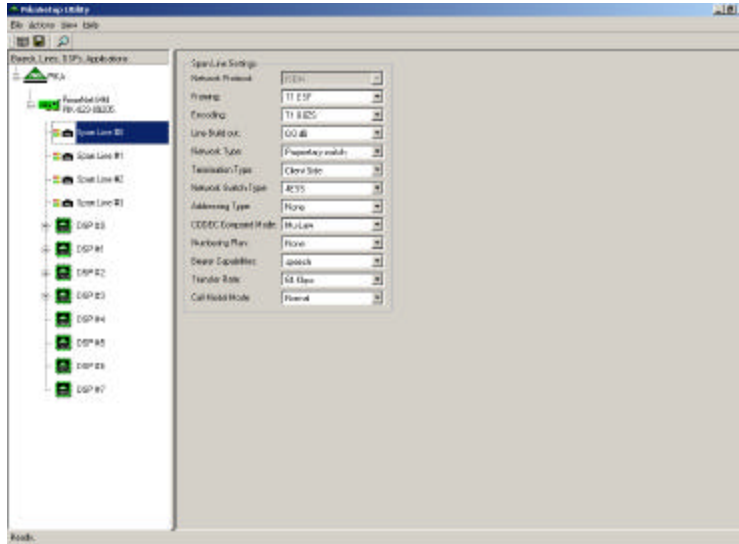
### Step 1

In the left pane click the **Primenet MM board**. The utility will automatically detect how many spans your board has and populate the **Number of Span Lines** field. Please verify that the setting is correct.



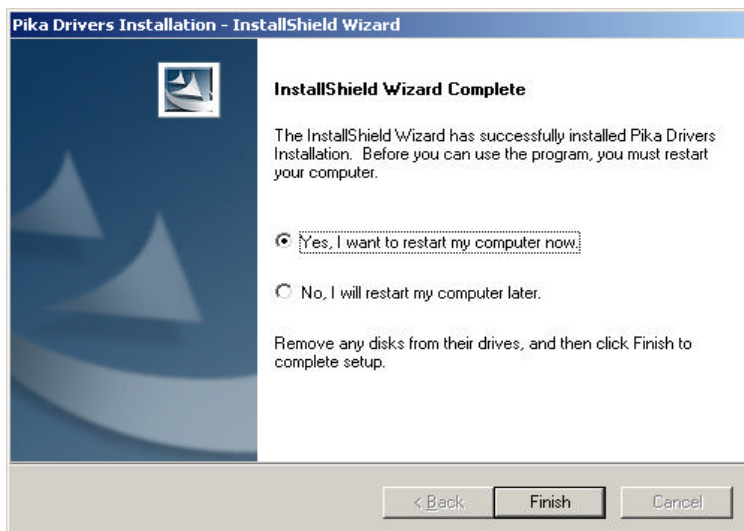
## Step 2

Click the “+” next to the Primenet board. You will now see all available spans. Click on the first span. On the left pane you will see **Span Line Setting**. Please select the correct line settings using the **NTS ISDN/PRI Line Configuration** worksheet. You will need to set the line settings accordingly for every span.



## Step 3

Once you have finished setting the spans, save the setting and exit the utility. You will now see the **InstallShield Wizard Complete** window. Select **Yes, I want to restart my computer now** and click **Finish**. As referenced in the **NTS Quick Start Guide**, you may now install the NTS server software on this PC. You will need to check the box for “**Telephony Servers**” to install the NTS software to control this Primenet MM board.



**End of Document**